

Welcome to Concert Band!

Carter Matschek – Director
434-5326 ext. 43557
carter.matschek@leanderisd.org

Dear Concert Band Members,

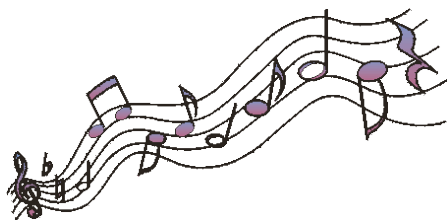
I am the new assistant band director at Canyon Ridge and I am extremely excited about our year together! I look forward to working with each and every one of you and anticipate a great year of music making. This ensemble is very much a “top” band to me and I will absolutely approach it as so. I know we can attain a high level of playing and musicianship and I look forward to getting started.

For the 7th graders, I want you to understand how much more exciting this experience will be from your beginning year. You will be challenged on an individual playing level because you are now in a class with only a few instruments like your own. You will have to be willing to be more independent thinkers and learners than in your first year as you will now be playing in the full band setting. Each of you is an important and integral part of the ensemble as a whole.

For the 8th graders, I look forward for you to be the leaders in your sections and for the band. Your skills as a player, experience, and maturity will ensure success for you to set a standard of excellence that the rest of the band will follow. Your leadership is a key element for the success of our band this year as you play a vital role in our great musical potential.

The expectation of great things to happen for the Concert Band is set very high from the achievements of the CRMS bands before us. Progress is an essential element for growth and learning to take place in every meeting. I cannot wait to hear what we sound like! I look forward to a wonderful and challenging year with you!

Mr. Matschek



Supply List

1. Band Book 1: Foundations for Superior Performance by Williams/King
2. Band Book 2: Essential Musicianship For Band: Intermediate Ensemble Concepts by Green/Benzer
3. Black 3 ring binder, preferably 1 inch
4. Package of sheet protectors (around 20)
5. Pencil pouch and an endless supply of pencils
6. Highlighters (blue, green, yellow, orange, and pink)
7. Music stand (for home practice)
8. Metronome (for home practice)
9. Chromatic tuner (Seiko or Korg) in class every day (you can get a combo metronome and tuner)
10. Pick up for tuner
11. Reeds: Sax/Clarinet: 4 good working Vandoren reeds at all times. Bassoon/Oboe: 3 good reeds.
12. High quality cassette tape or CD for test tapes, or the ability to send sound files to me through email
13. **OPTIONAL**: 1 ream of colored paper

You should be prepared with these supplies every day in class. I will check for these supplies on Monday, September 14.

Concert Dress Clothes

Your concert dress clothes are needed by October:

Girls: White band dress shirt (instructions on ordering online will come soon), black slacks/dress pants, black belt, black hose or socks, and black dress shoes

Guys: Solid white band dress shirt (instructions on ordering online will come soon), black tie, black dress pants, black belt, black socks, black dress shoes

The formal shirt is a different shirt than last year's formal shirt. We have found more affordable shirts that should fit better this year. An informal band shirt will also be needed. Order forms will be available soon.

Reminders

Grades: Your academic grades will now affect your participation in extracurricular activities. The rule is "No Pass, No Play". To participate you must make a 70 or higher in ALL classes.

Sectionals: You are required to attend one hour of additional instruction per week. The instructors will try to accommodate scheduling conflicts with school related activities when possible.

Practice Sheets: We are requiring 7th and 8th graders to keep a record of the time spent each day practicing again (7th graders are already used to this type of practice sheet). You will be required to practice at least 180 minutes every week. Weekly goals will be given for each practice sheet. Practice sheets are due every Friday and must have a parent signature. **If you are ever without a practice sheet, go to the band website, crmsband.com, and print out a new one.**